

VA 101

A series of several parallel white lines of varying thicknesses, slanted diagonally from the bottom-left towards the top-right, crossing the right side of the text.

WHY ARSENAL HAVEN'T WON THE  
LEAGUE IN THE LAST DECADE???

- VAASTAV ANAND



# WHAT DATA DID I USE?


BARCLAYS PREMIER LEAGUE 2007/2008													
Team	P	HOME					AWAY					GD	Pts
		W	D	L	F	A	W	D	L	F	A		
1. Man Utd	24	12	1	0	31	3	6	2	3	17	8	37	87
2. Arsenal	24	11	2	0	29	5	4	4	1	20	9	32	57
3. Chelsea	24	8	4	0	23	8	8	1	3	14	8	21	53
4. Everton	24	7	2	3	23	11	6	2	4	17	12	17	43
5. Aston Villa	24	7	2	4	20	16	4	6	1	23	15	12	41
6. Man City	24	6	3	0	20	5	2	3	5	11	17	6	41
7. Liverpool	23	4	6	1	23	9	6	4	2	14	5	23	40
8. Blackburn	24	3	3	4	13	13	3	3	2	19	18	1	38
9. Portsmouth	24	3	6	2	14	9	7	1	5	20	16	9	37
10. West Ham	23	2	4	3	13	12	3	2	4	14	9	8	36
11. Tottenham	24	6	1	4	32	21	1	6	6	12	19	4	28
12. Newcastle	24	2	4	2	14	17	2	2	8	11	25	-15	27
13. Middlesbrough	24	3	4	5	13	18	3	3	6	8	19	-16	25
14. Sunderland	24	6	3	3	15	13	0	2	10	3	29	-18	23
15. Bolton	24	2	4	4	17	11	0	3	8	7	33	-20	22
16. Reading	24	6	1	5	14	17	0	3	9	16	33	-20	22
17. Birmingham	24	2	3	3	12	13	3	2	8	11	33	-23	20
18. Wigan	24	4	2	5	14	14	1	3	9	3	28	-17	20
19. Fulham	24	2	3	3	14	21	0	3	7	7	21	-19	16
20. Derby County	24	1	3	6	8	21	0	2	10	4	30	-29	8

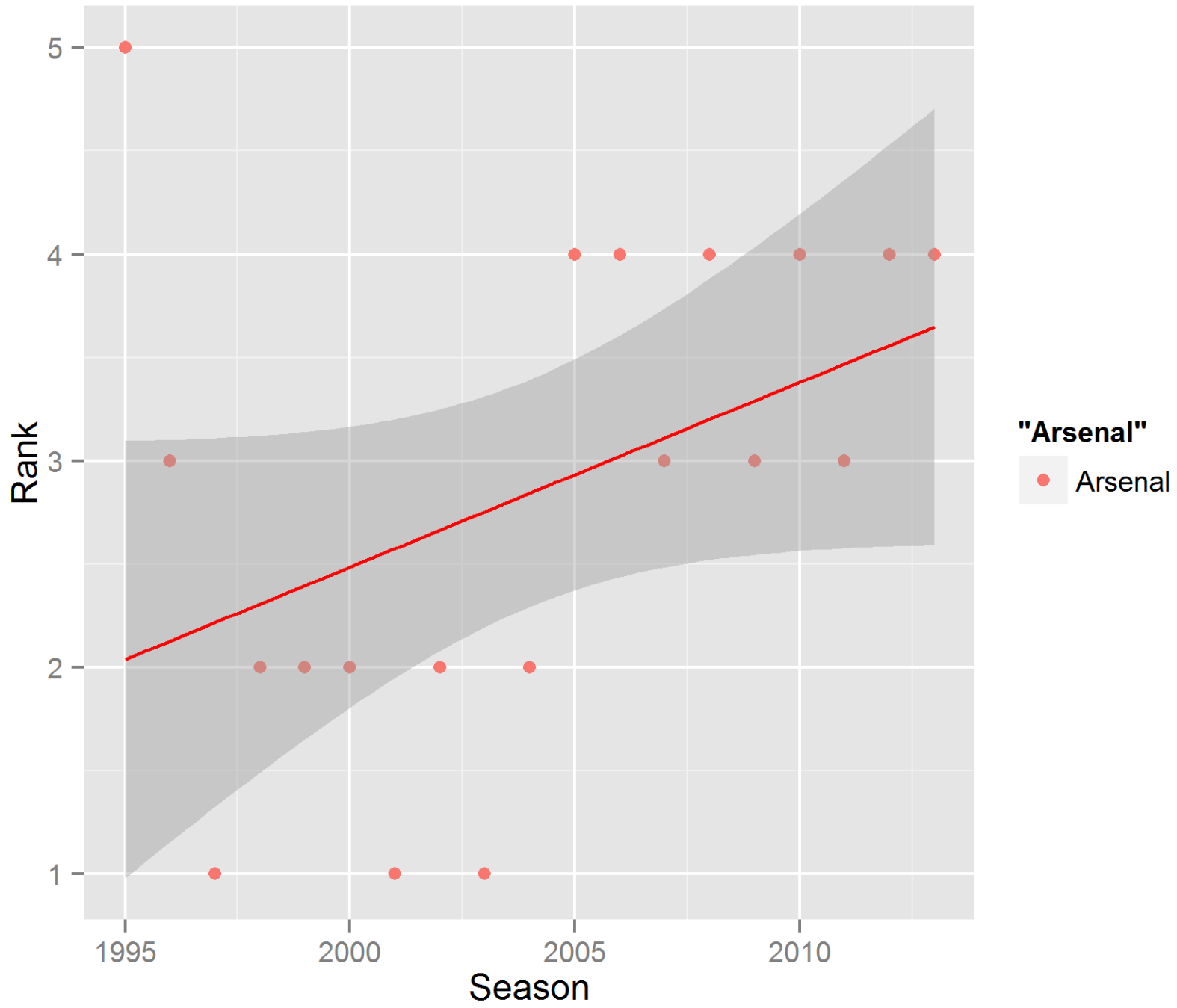
<https://github.com/footballcsv/en-england>

Date	Home Team	Away Team	FT Score	HT Score
2013-08-17	Arsenal	Aston Villa	1-3	1-1




# IS IT BECAUSE....

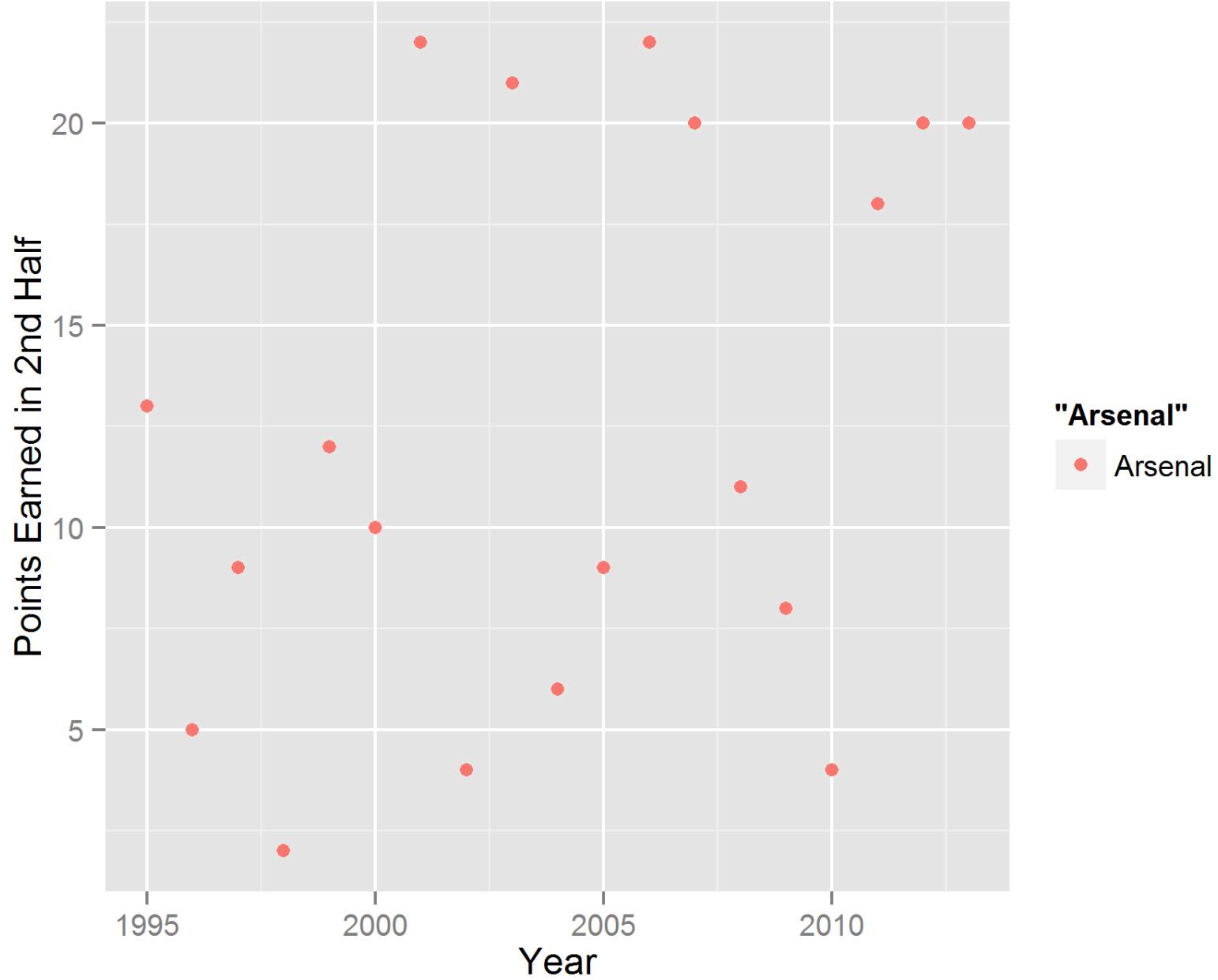
- ▶ **We have been absolutely abysmal?**
  - ▶ We don't have what it takes?
  - ▶ Other teams have been better than us?
  - ▶ It's a voodoo ploy by the good for nothing Spuds.
- 
- A decorative graphic consisting of several parallel white lines of varying lengths, slanted upwards from left to right, located in the bottom right corner of the slide.



# IS IT BECAUSE....

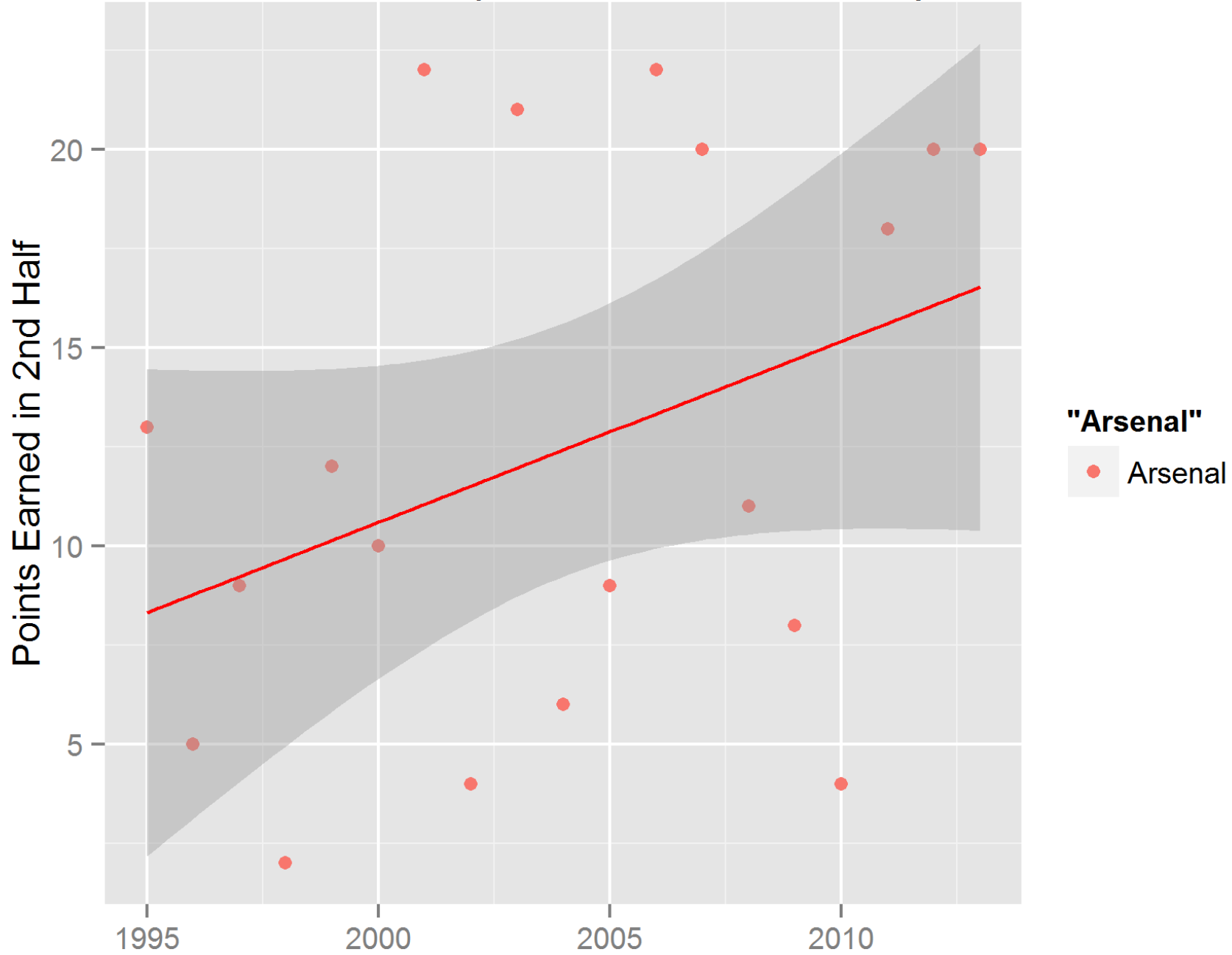
- ▶ We have been absolutely abysmal?
  - ▶ **We don't have what it takes?**
  - ▶ Other teams have been better than us?
  - ▶ It's a voodoo ploy by the good for nothing Spuds.
- 

# Arsenal's 2nd-half performance over the years





# Arsenal's 2nd-half performance over the years




# IS IT BECAUSE....

- ▶ We have been absolutely abysmal?
- ▶ We don't have what it takes?
- ▶ Other teams have been better than us?
- ▶ **It's all a voodoo ploy by the good for nothing Spuds.**(What do you think of Tottenham?)

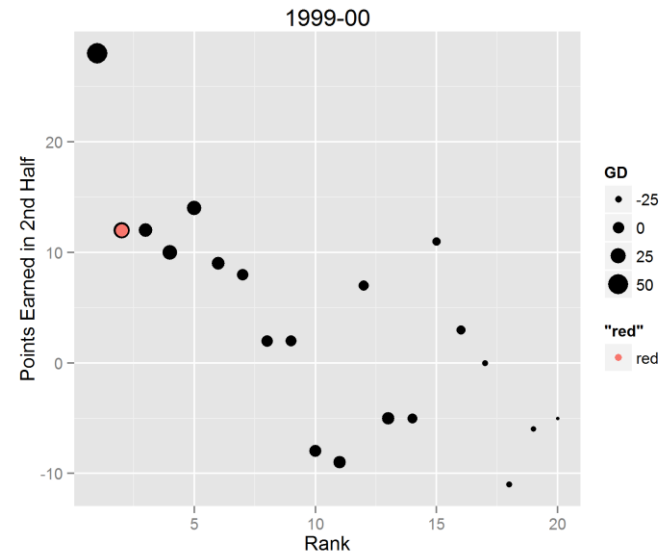
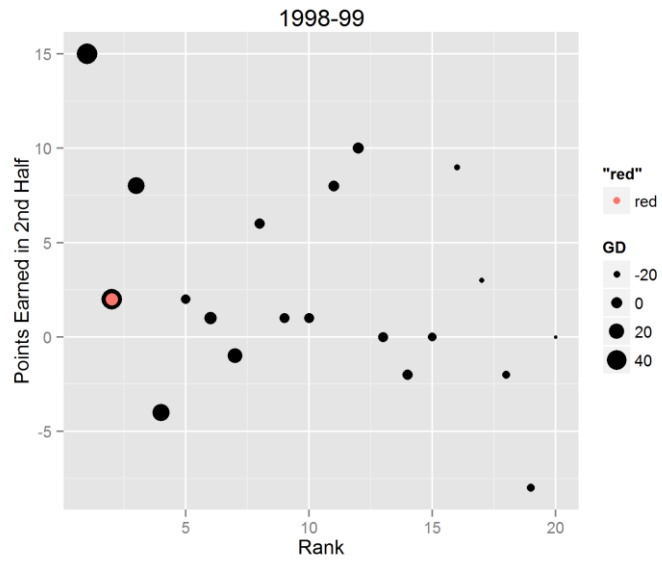
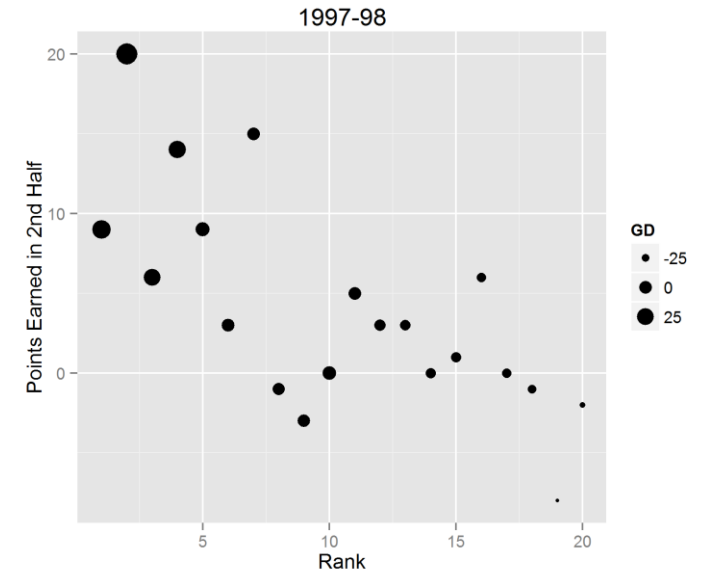
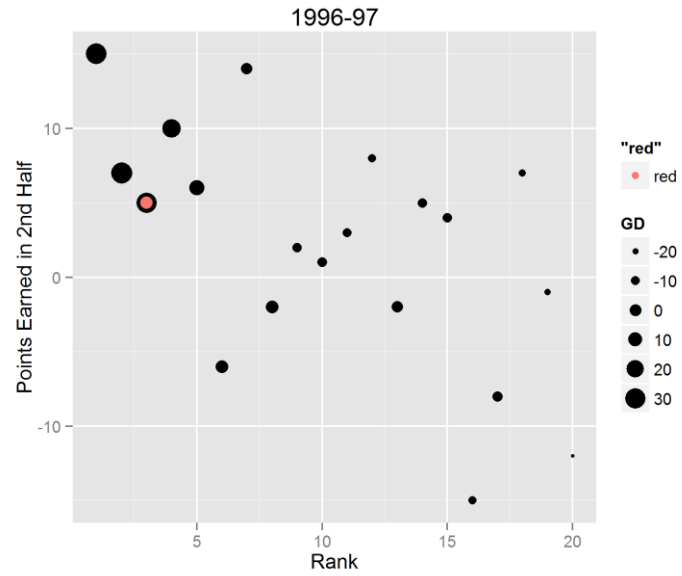
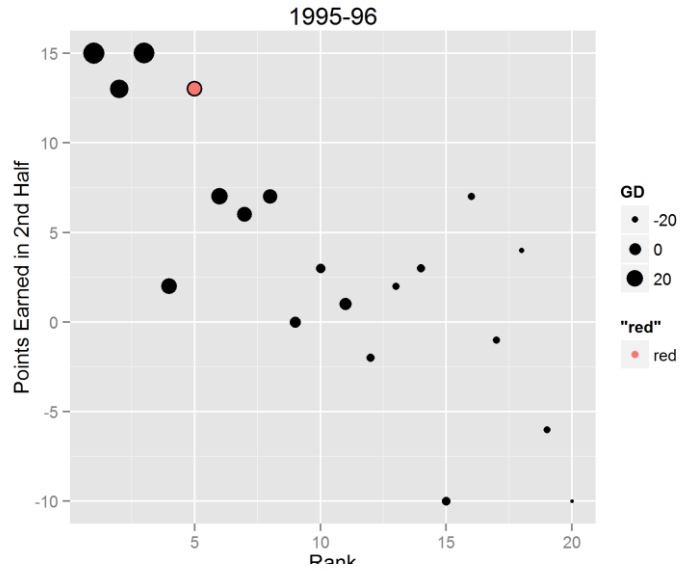
YEAH...NO. DEFINITELY NOT THAT!



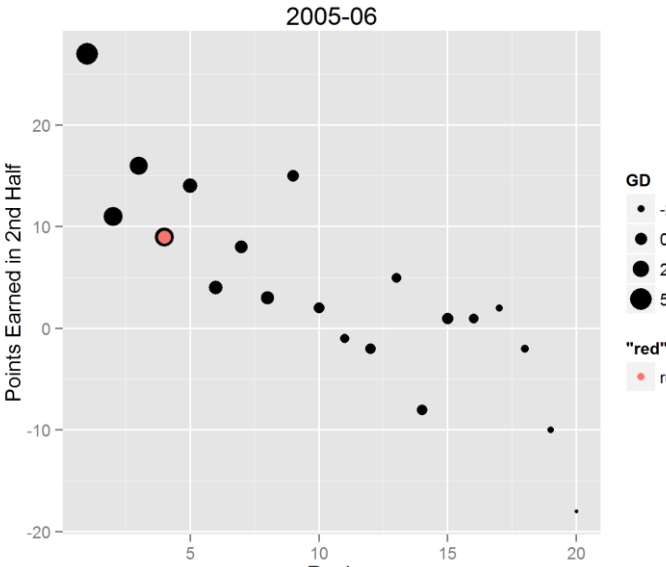
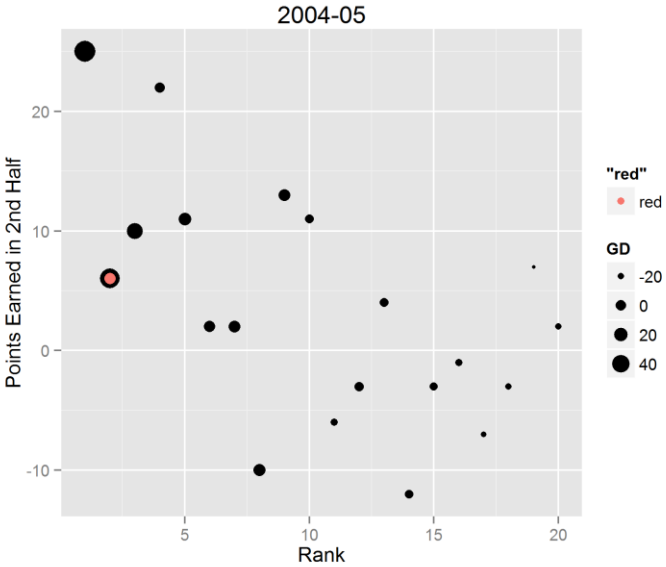
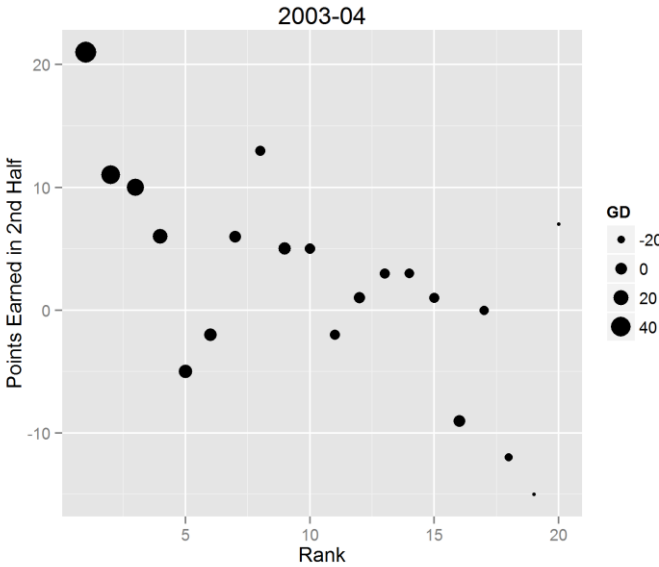
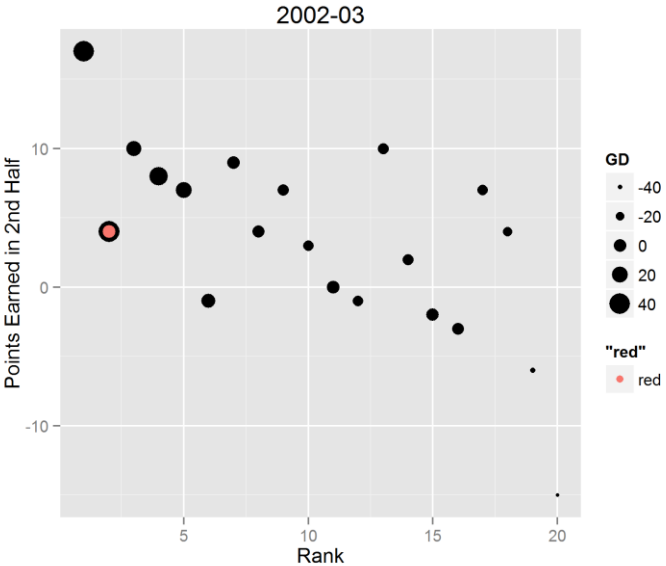
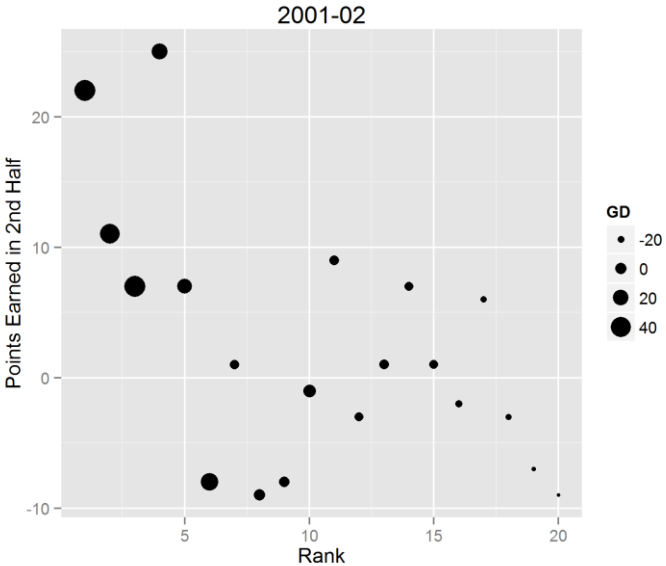
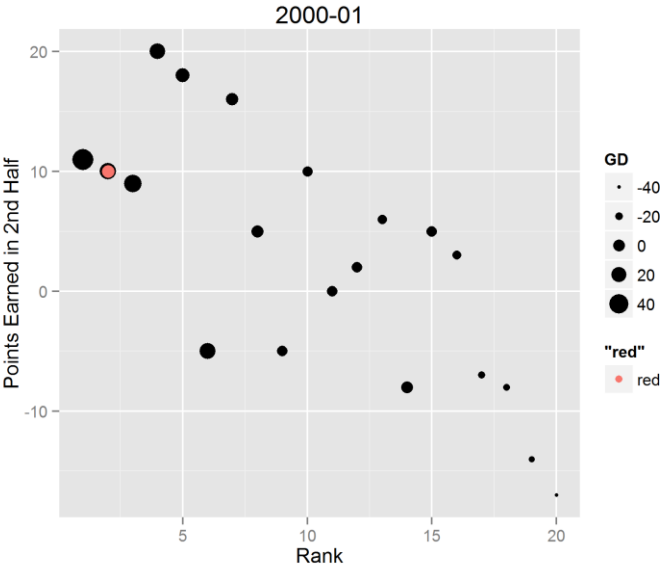
# IS IT BECAUSE....

- ▶ We have been absolutely abysmal?
  - ▶ We don't have what it takes?
  - ▶ **Other teams have been better than us?**
  - ▶ It's a voodoo ploy by the good for nothing Spuds.(What do you think of Tottenham?)
- 

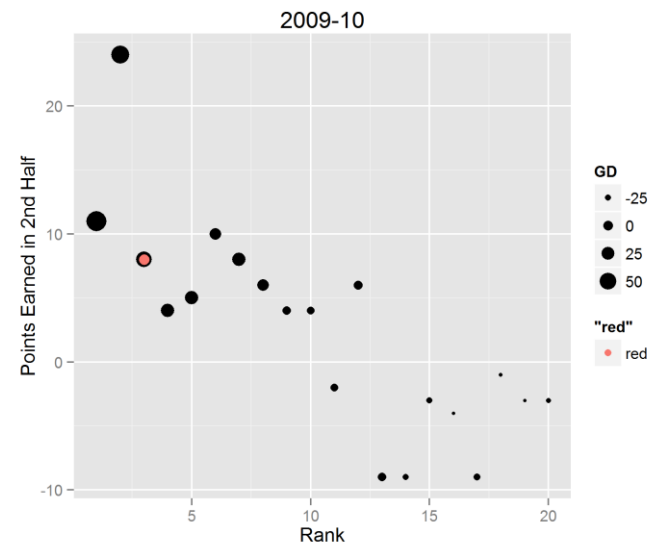
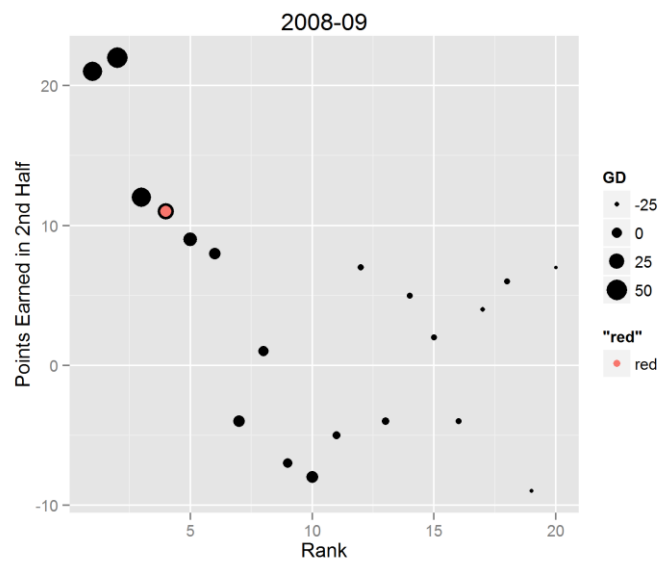
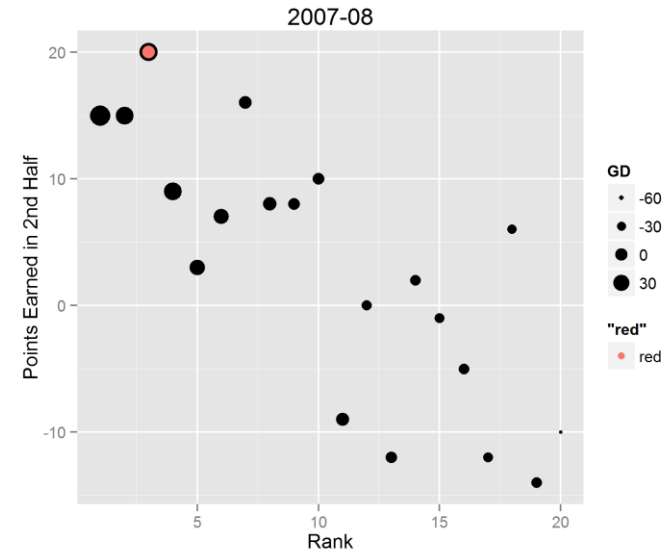
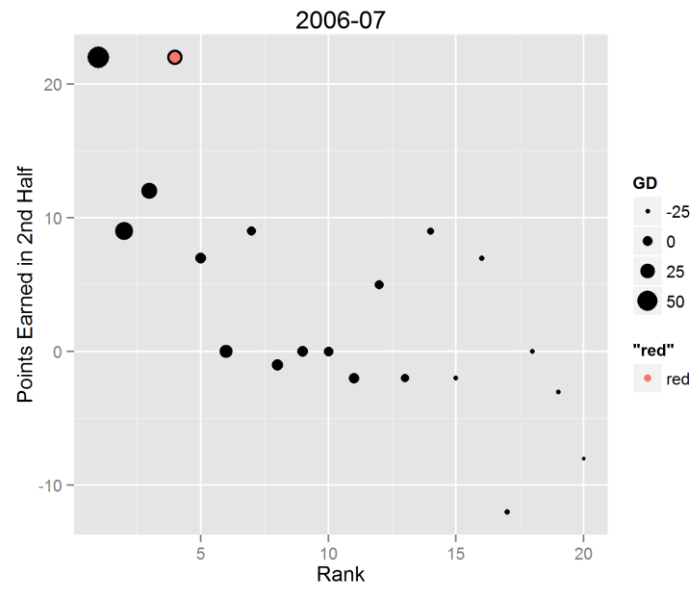
# THE 90s



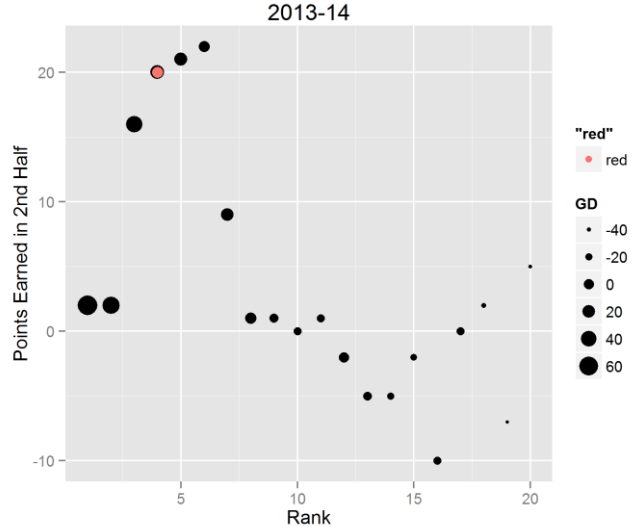
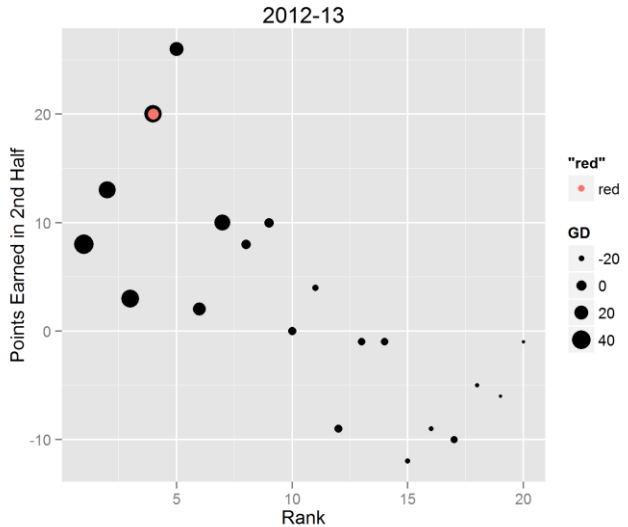
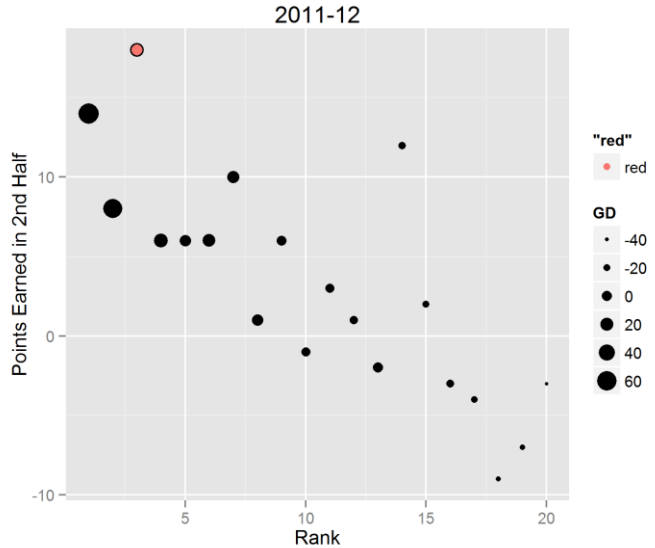
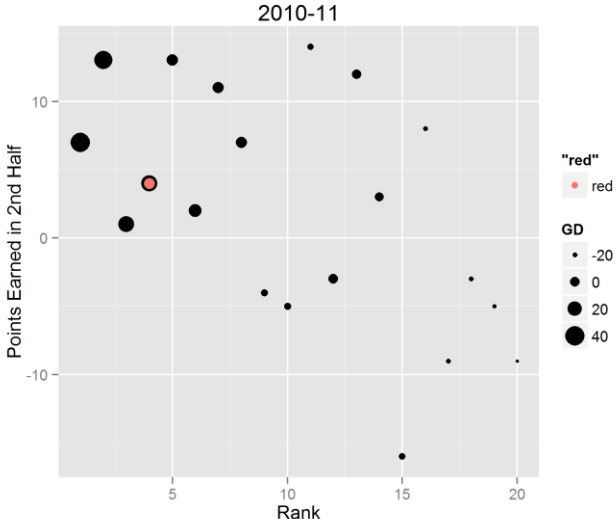
# THE EARLY 2000s



# THE LATE 2000s

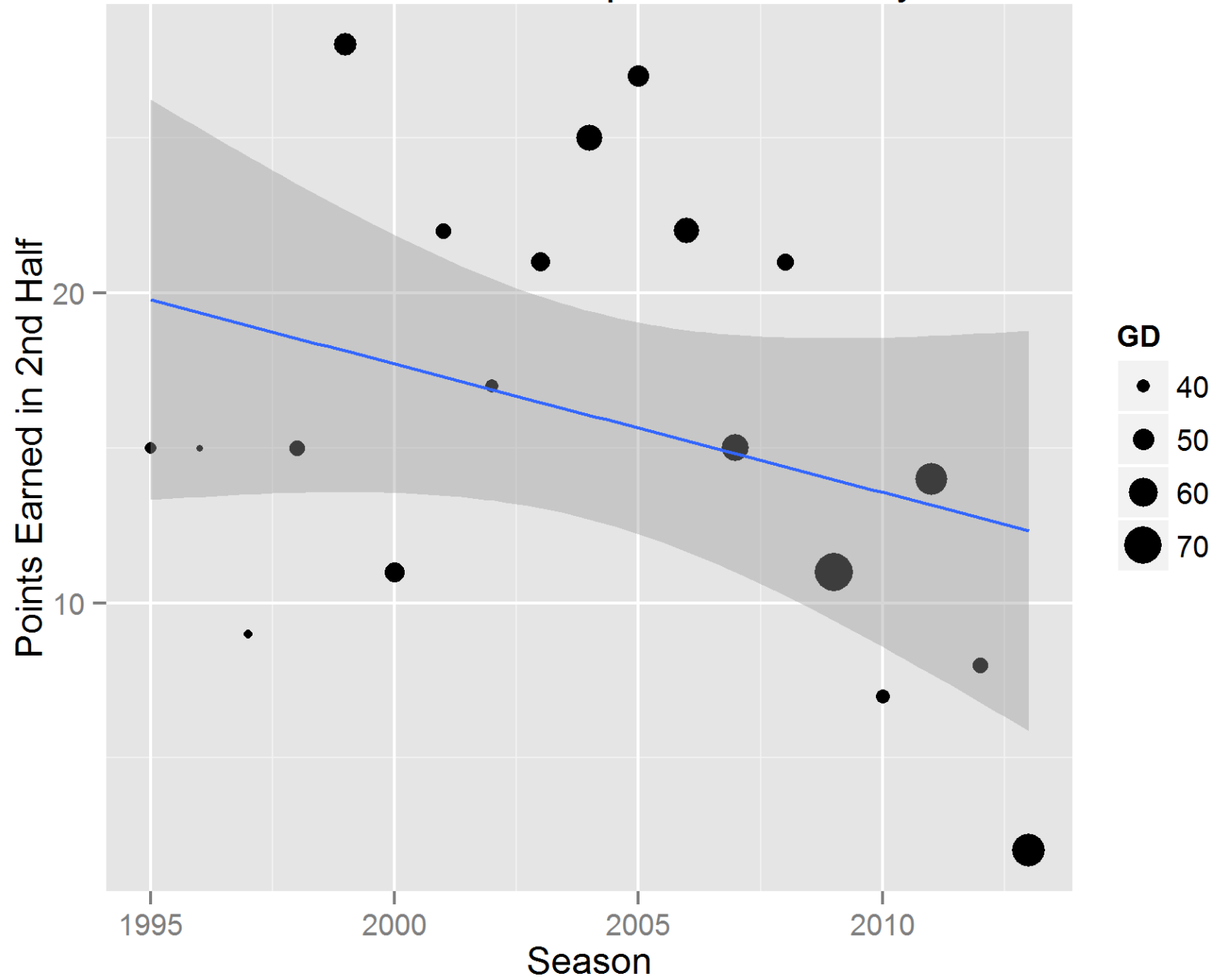


# THE 2010s





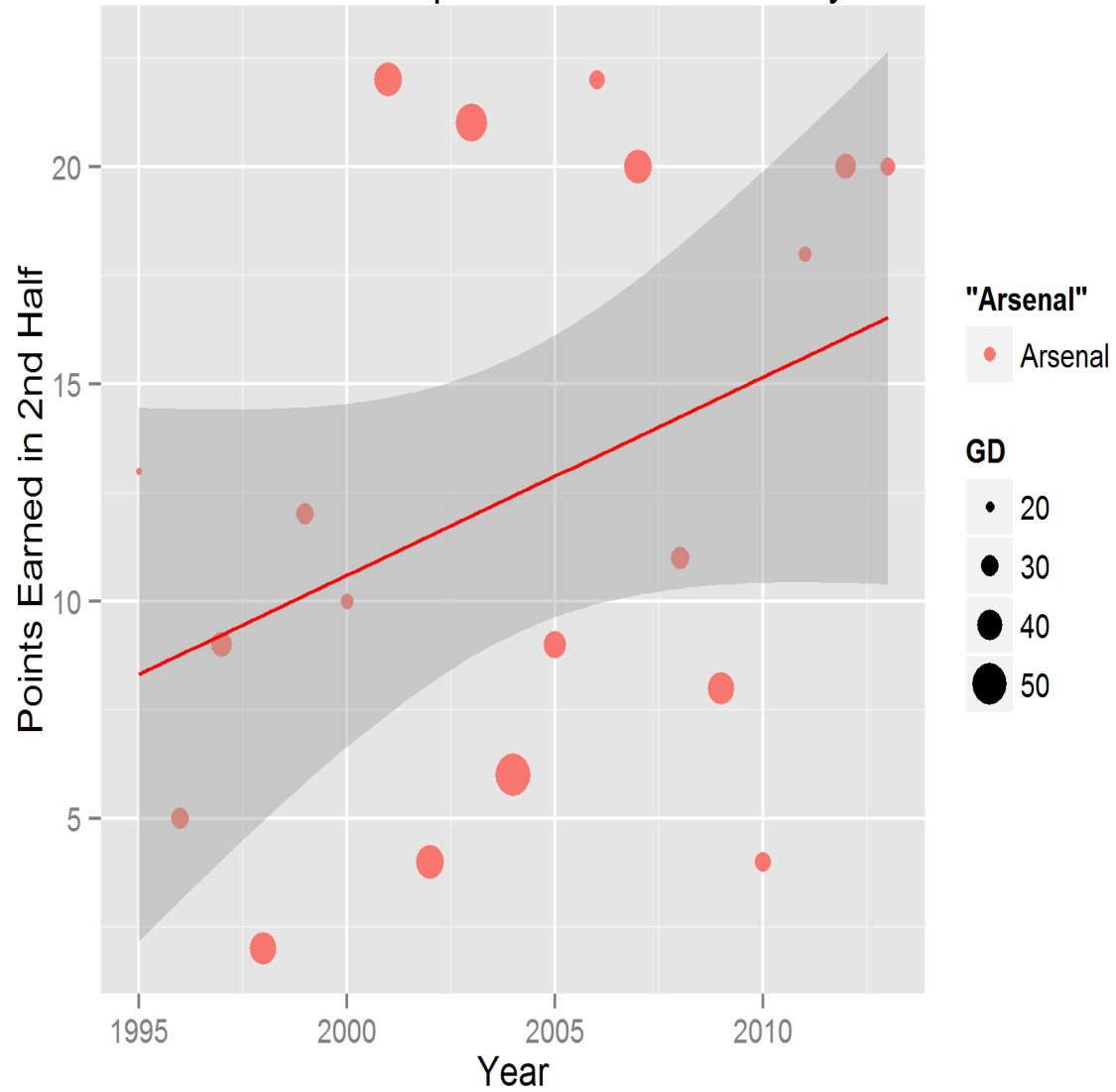
# Performance of Champions over the years



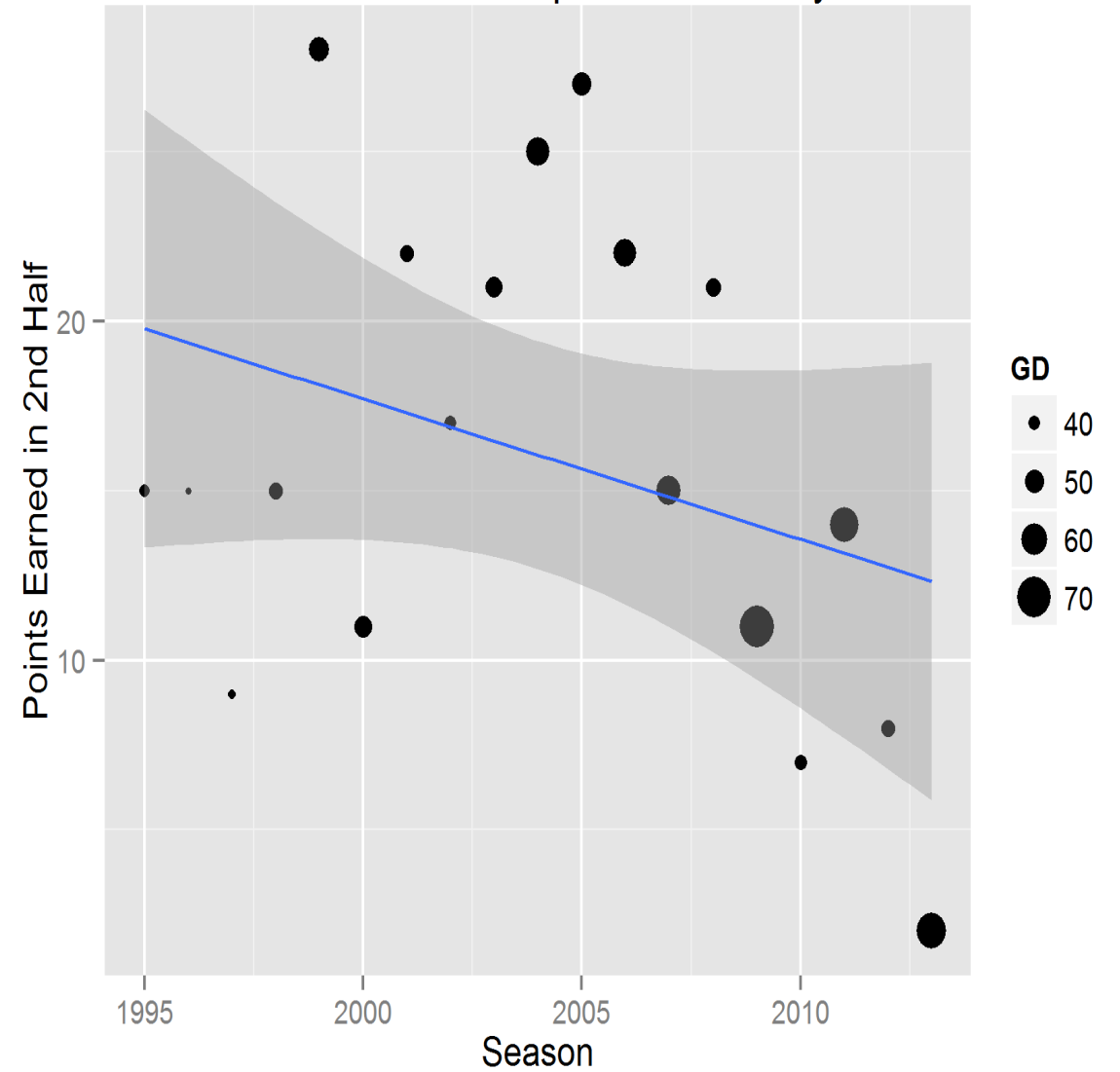
# Arsenal's 2nd-half performance over the years

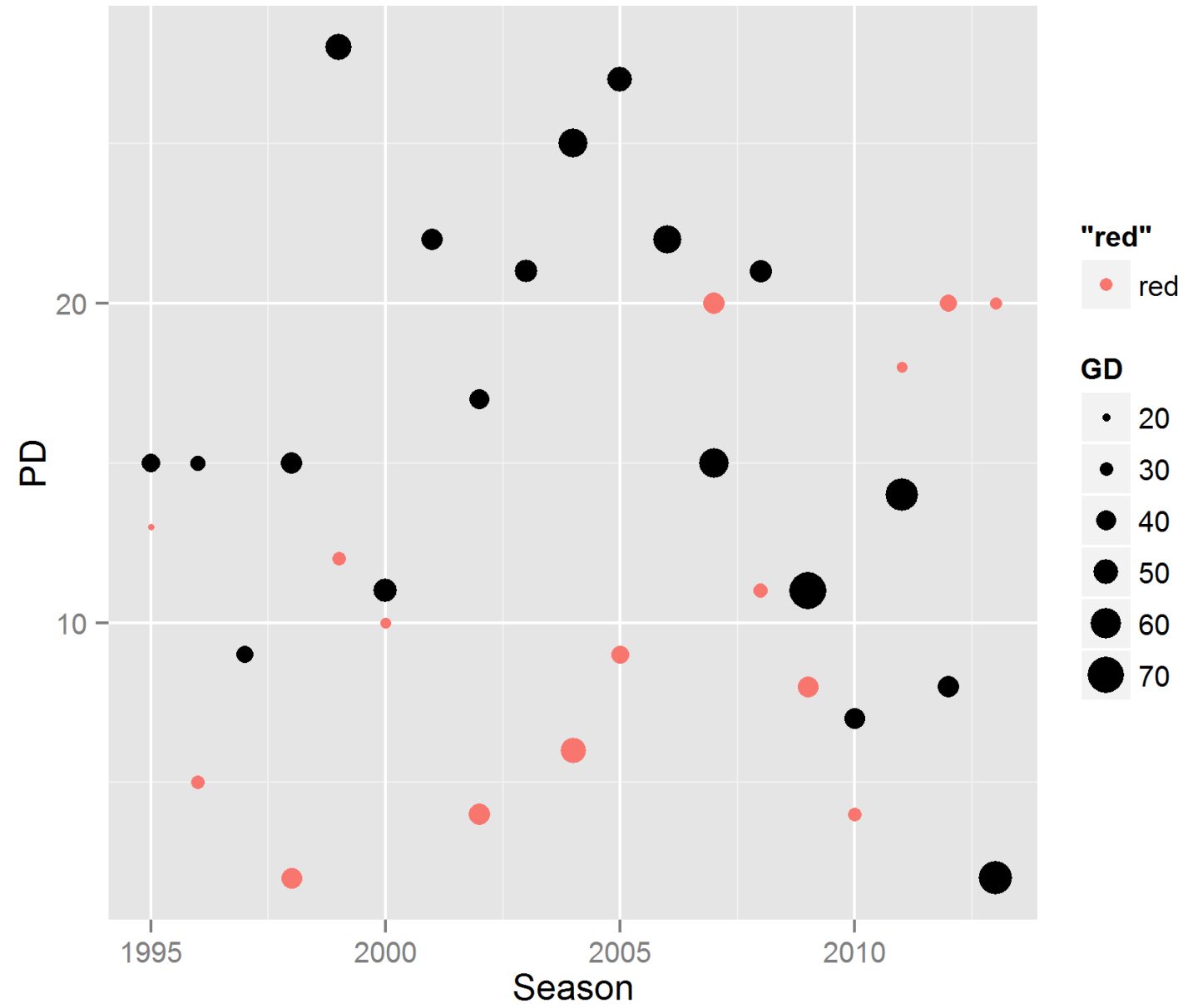


### Arsenal's 2nd-half performance over the years



### Performance of Champions over the years





# CONCLUSION



# CONCLUSION

Arsenal have progressed the exact opposite way than the Champions over the past few years.

A decorative graphic consisting of several parallel white lines of varying lengths, slanted upwards from left to right, located in the bottom right corner of the slide.

THANK YOU

